



| NEW
PRODUCTS





Introduction

Welcome to our 2022 new product launch preview. In this booklet, you will find images and product details of our newest chef coats and pants for the culinary professional.

This year's launch was inspired by industry trends that blend athleisure, kitchen apparel, and sustainability into one-of-a-kind pieces sure to appease both heart and mind.

Say hello to our Flex series chef coats, inspired by movement, minimalistic design, and maximum comfort. Highlighting its main feature - recycled, soft-touch woven knit mesh that stretches with you. Feel free to move about the galley.

FLEX
SERIES

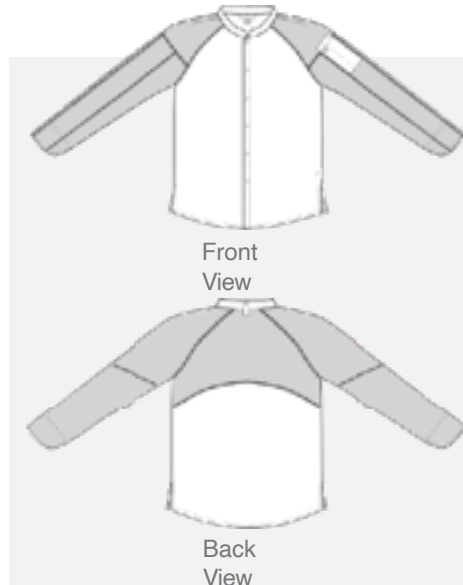


@ 2022 Chef
Works





TULUM



Say hello to your new best friend: a breathable, comfortable, stretch, working chef coat. Our Tulum Chef Coat features recycled, knitted mesh on the sleeves, shoulders, and upper yoke that offer unmatched stretch and freedom of movement wherever you are. This coat has a minimalistic silhouette delivering a clean, comfortable feel empowering you to stay calm when the pressure is on.

Product Code:
CBS01

Style: _____

Men's Size: _____

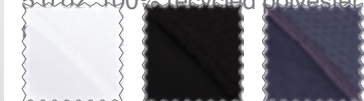
Features:

- S 5.2 oz. 62/38 poly/cotton
- 5.0 oz. 100% recycled polyester knit mesh
- Raglan long sleeve coat
- Snap front closure
- Left sleeve thermometer pocket
- Side slits
- Back collar apron tab
- Color-matching knit mesh
- Recycled stretch fabrics
- Women's style available



Fabric & Colors: 5.2 oz. 62/38 poly/cotton,

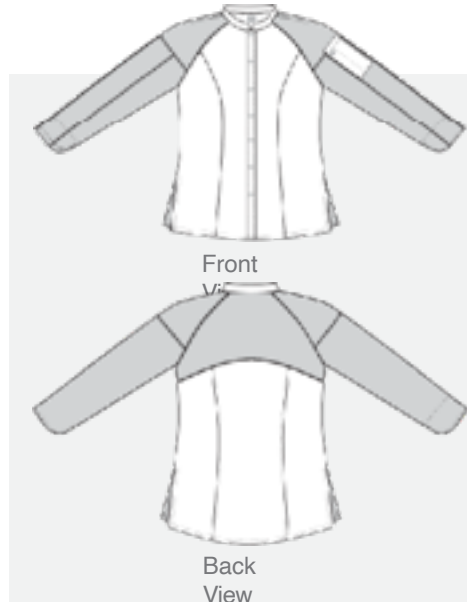
5.0 oz. 100% recycled polyester knit



White - WHT Black - BLK Gray - GRY



TULUM



Say hello to your new best friend: a breathable, comfortable, stretch, working chef coat. Our Tulum Chef Coat features recycled, knitted mesh on the sleeves, shoulders, and upper yoke that offer unmatched stretch and freedom of movement wherever you are. This coat has a minimalistic silhouette delivering a clean, comfortable feel empowering you to stay calm when the pressure

is on.

Style:

Women's

Product Code: CBS01W

Size: XS -

FXL

Features:

- 5.2 oz. 62/38 poly/cotton
- 5.0 oz. 100% recycled polyester knit mesh
- Raglan long sleeve coat
- Snap front closure
- Left sleeve thermometer pocket
- Side slits with knitted mesh
- Back collar apron tab
- Color-matching knit mesh
- Recycled stretch fabrics
- Men's style available



Fabric & Colors: 5.2 oz. 62/38 poly/cotton,

5.0 oz. 100% recycled polyester knit



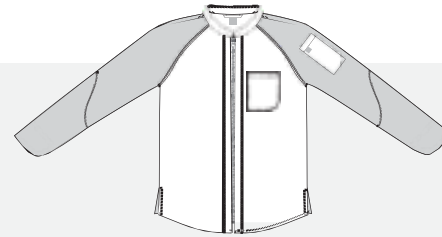
White - WHT

Black - BLK

Gray - GRY



NEPAL



Front View



Back View



If you love zipper coats then there's no doubt you'll love the Nepal Chef Coat. Similar to Nepal being the heart of the Himalayas, our Nepal Chef Coat will quickly find its own way into your heart. Features our recycled soft-touch, knitted Cool Vent™ mesh fabric on the sleeves and back yoke, a comfortable fit, and minimalist design. The Nepal Chef Coat is everything you need when cooking inspires you to stretch the limit.

Style:
Product Code: CBZ02
Men's

Size: S -
Features:
4XL

- 5.2 oz. 62/38 poly/cotton
- 5.0 oz. 100% recycled polyester knit mesh
- Raglan long sleeve coat
- Center zipper
- Left sleeve thermometer pocket
- Left chest pocket
- Back collar apron tab
- Side slits
- Color-matching knit mesh
- Sustainable stretch fabrics
- Women's style available



Fabric & Colors: 5.2 oz. 62/38 poly/cotton,





NEPAL



If you love zipper coats then there's no doubt you'll love the Nepal Chef Coat. Similar to Nepal being the heart of the Himalayas, our Nepal Chef Coat will quickly find its own way into your heart. Features our recycled soft-touch, knitted Cool Vent™ mesh fabric on the sleeves and back yoke, a comfortable fit, and minimalist design. The Nepal Chef Coat is everything you need when cooking inspires you to stretch the limit.

Style:
Product Code: CBZ02W
Women's

Size: XS
Features:

- 5.2 oz. 62/38 poly/cotton
- 5.0 oz. 100% recycled polyester knit mesh
- Raglan long sleeve coat
- Center zipper
- Left sleeve thermometer pocket
- Back collar apron tab
- Side slits with knitted mesh
- Color-matching knit mesh
- Sustainable stretch fabrics
- Men's style available



Fabric & Colors: 5.2 oz. 62/38 poly/cotton,

5.0 oz. 100% recycled polyester knit



White - WHI Black - BLK Gray - GRY Ocean Blue - OCB



VARKALA



Front View



Back View



Feel revived and renewed wearing our Varkala Chef Coat. Our raglan short sleeve coat featuring an off-set zipper front with a snap collar, back collar apron tab to hold any apron strap in place. Move with ease with color-matching knitted mesh sleeves and back curved yoke which are made with a recycled stretch fabric.

Product Code:

CBZ03

Style:

Men's Size:

Features:

- S - 4XL
- 5.2 oz. 62/38 poly/cotton
- 5.0 oz. 100% recycled polyester knit mesh
- Raglan short sleeve coat
- Off-set zip front
- Snap collar
- Back collar apron tab
- Left sleeve pocket
- Front concealed thermometer/pen pockets
- Side slits
- Color-matching knit mesh
- Sustainable stretch fabrics
- Women's style available



Fabric & Colors: 5.2 oz. 62/38 poly/cotton,

5.0 oz. 100% recycled polyester knit



White - WHT Black - BLK Gray - GRY Natural - NAT Teal - TEA



VARKALA



Front View



Back View



Feel revived and renewed wearing our Varkala Chef Coat. Our raglan short sleeve coat featuring an off-set zipper front with a snap collar, back collar apron tab to hold any apron strap in place. Move with ease with contrasting knitted mesh sleeves and back curved yoke which are made with a recycled stretch fabric.

Product Code:
CBZ03W

Style:

Women's

Features:

Size: XS
5.2 oz. 62/38 poly/cotton

• 5.0 oz. 100% recycled polyester knit mesh

- Raglan short sleeve coat
- Off-set zip front
- Snap collar
- Back collar apron tab
- Left sleeve pocket
- Front concealed thermometer/pen pockets
- Side slits with knitted mesh
- Color-matching knit mesh
- Sustainable stretch fabrics
- Men's style available



Fabric & Colors: 5.2 oz. 62/38 poly/cotton,

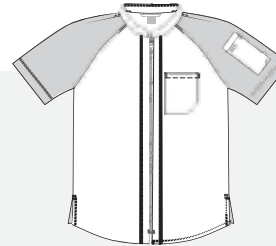
5.0 oz. 100% recycled polyester knit



White - WHT Black - BLK Gray - GRY Natural - NAT Teal - TEA



ARCADIA



Front View



Back View



The Arcadia Chef Coat bends the rules of the traditional chef coat and encourages freedom of movement, creativity, and purpose. This chef coat is environmentally friendly with its recycled, stretch, Cool Vent™ mesh fabric allowing your reach to have no bounds. Enjoy a modern fit with minimalistic design, empowers you to steer your own destiny.

Product Code:
CBZ04

Style: _____

Men's Size: _____

Features:

- S 5.2 oz. 62/38 poly/cotton
- 5.0 oz. 100% recycled polyester knit mesh
- Raglan short sleeve coat
- Center zip
- Left sleeve thermometer pocket
- Left chest pocket
- Back collar apron tab
- Side slits
- Color-matching knit mesh
- Sustainable stretch fabrics
- Women's style available



Fabric & Colors: 5.2 oz. 62/38 poly/cotton,
5.0 oz. 100% recycled polyester knit





ARCADIA



Front View



Back View



The Arcadia Chef Coat bends the rules of the traditional chef coat and encourages freedom of movement, creativity, and purpose. This chef coat is environmentally friendly with its recycled, stretch, Cool Vent™ mesh fabric allowing your reach to have no bounds. Enjoy a modern fit with minimalistic design, empowers you to steer your own destiny.

Product Code:

CBZ04W

Style:

Women's

Features:

Size: XS

- 5.2 oz. 62/38 poly/cotton
- 5.0 oz. 100% recycled polyester knit mesh
- Raglan short sleeve coat
- Center zip
- Left sleeve thermometer pocket
- Back collar apron tab
- Side slits with knitted mesh
- Color-matching knit mesh
- Sustainable stretch fabrics
- Men's style available



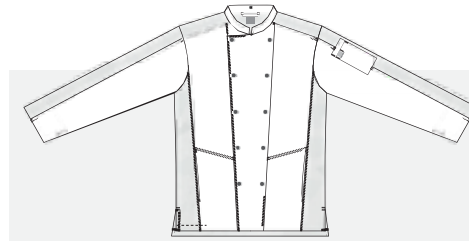
Fabric & Colors: 5.2 oz. 62/38 poly/cotton,

5.0 oz. 100% recycled polyester knit





MOJAVE



Front View



Back View



Our Mojave Chef Coat - the newest chef coat addition to our Chef Works Urban Collection™. Featuring camouflage patterned stretch-knit fabric, making it stylish and comfortable. Fire up the grill and bust

Put the truck on:

Product Code:
CBN01

Style: Men's

Size: S -
4XL

Features:

- 5.2 oz. 62/38 poly/cotton
- 4.7 oz. 90/10 polyester/elastane knit mesh
- Long sleeve stretch coat
- Double-breasted button front
- Left sleeve thermometer pocket w/3 divides
- 2 front hip pockets
- Back length longer than front
- Side slits
- Color-coordinating camouflage stretch knit
- Back collar apron tab
- Women's style available



Fabric & Colors: 5.2 oz. 62/38 poly/cotton,
4.7 oz. 90/10 polyester/elastane knit



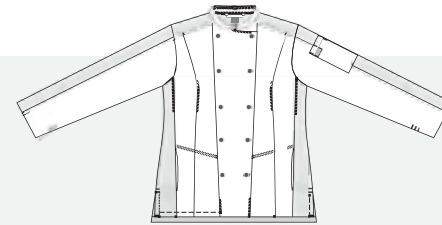
White -
WHT



Dark Olive -
OLI



MOJAVE



Front View



Back View



Our Mojave Chef Coat - the newest chef coat addition to our Chef Works Urban Collection™. Featuring camouflage patterned stretch-knit fabric, making it stylish and comfortable. Fire up the grill and bust out the smoke.

Product Code:

CBN01W

Style:

Women's

Size: XS

Features:

- 5.2 oz. 62/38 poly/cotton
- 4.7 oz. 90/10 polyester/elastane knit mesh
- Long sleeve stretch coat
- Double-breasted button front
- Left sleeve thermometer pocket w/3 divides
- 2 front hip pockets
- Back length longer than front
- Side slits
- Color-coordinating camouflage stretch knit
- Back collar apron tab
- Men's style available

URBAN

Cool Vent

STRETCH

Fabric & Colors: 5.2 oz. 62/38 poly/cotton,

4.7 oz. 90/10 polyester/elastane knit



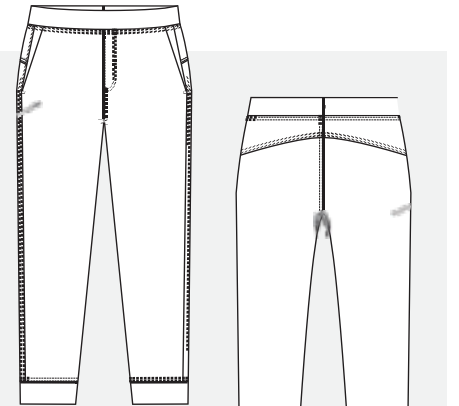
White - WHT



Dark Olive - OLI

JOGGER2.0

27



Front View

Back View

And finally, the next generation of chef pants, the Jogger 2.0. This new Urban Collection pant offers a four-way stretch fabric that you can work and play in. Once you go Jogger, you never go back.

Product Code: PBE02

Style: Men's

Size: XXS -

Features:

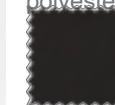
- 4XL
- 8.8 oz. 88/12 recycled polyester/ elastane
- 4.4 oz. 100% polyester knit mesh
- Unisex work jogger
- 4-way stretch knit
- Cool Vent™ in-seam gusset
- Elastic waist including inner flat drawcord
- Side seam pockets
- Right leg side pocket with zipper closure
- Cool Vent™ vented pockets
- Faux fly
- Back yoke
- Made from recycled fabrics



Cool Vent

STRETCH

Fabric & Colors: 8.8 oz. 88/12 recycled polyester/ elastane, 4.4 oz. 100% polyester knit mesh



Black -
BLK





Danny Collens | Executive Chef | The Matador, Portland OR | Mojave Chef Coat | CBN01-OLI